

TITUS® TwistLIFT® Security Lock Opening Tool



Product Number: COT30

Design Features:

- 316L Stainless Steel Machined Socket
- Complete Welded Construction
- Powder coated Finish

**Disclaimer:** Weights (4 lbs) dimensions (Inches/mm), are provided for your guidance. We reserve the right to modify specifications without prior notice.

**Confidential:** This drawing is the property of TITUS® Wastewater Solutions, Inc. And embodies confidential information , registered trademarks, trade secret information, and/or know that is the property of TITUS® Wastewater Solutions, Inc.

All rights reserved. Do not reproduce in whole or in part without written permission.

Contact:  
Office: 877-582-9899  
Info@tituswws.com  
www.tituswws.com

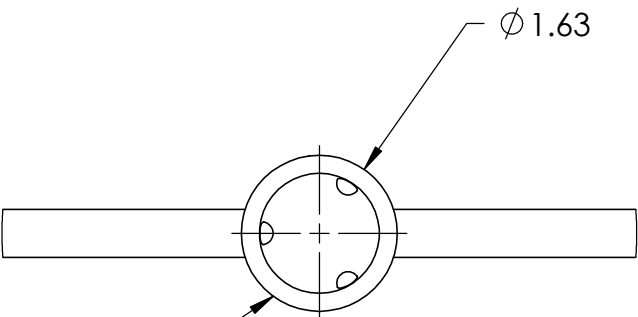
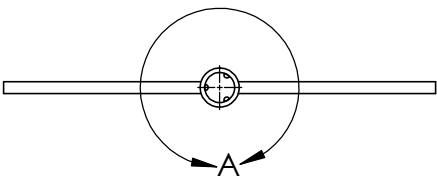
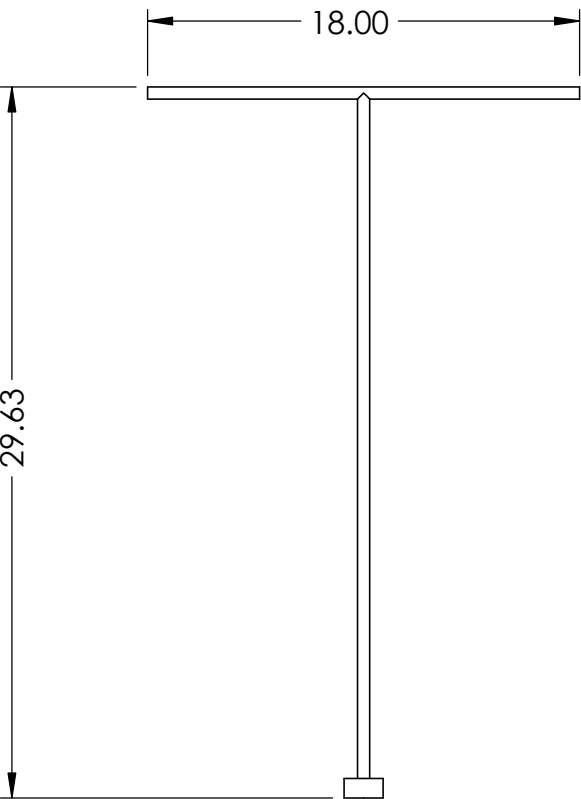
5301 CY Ave.  
Casper, WY 82604  
(541) 389-1975



TOLERANCES	
UNLESS OTHERWISE SPECIFIED, ALL DIMENSIONS ARE IN INCHES EXCEPT WHERE NOTED TOLERANCES ARE:	
DIMENSIONS ARE IN INCHES	
TOLERANCES:	
FRACTIONAL ± 1/16"	
ANGULAR: MACH ± 1	BEND ± 1
ONE PLACE DECIMAL ± .10	
TWO PLACE DECIMAL ± .01	
THREE PLACE DECIMAL ± .005	
THIRD ANGLE PROJECTION	

APPROVAL	DATE	TITLE:	
APPROVED:		SIZE: B	DWG.: Titus® TwistLIFT® Handle
DESIGNER:		SCALE: 1:8 DO NOT SCALE	
ELC		SHEET: 1 OF 1	REV.:

PROPRIETARY AND CONFIDENTIAL. THIS DOCUMENT CONTAINS CONFIDENTIAL OR PROPRIETARY INFORMATION WHICH IS THE PROPERTY OF TITUS. USE OF THIS DOCUMENT IS LIMITED TO AUTHORIZED CUSTOMERS, VENDORS, OR OTHER AGENTS OF OR FABRICATION LTD. UNAUTHORIZED US OF THIS DOCUMENT SHALL BE PROSECUTED TO THE FULLEST EXTENT OF THE LAW



DETAIL A  
SCALE 1 : 2

This Socket Fits  
Titus® TwistLIFT® Security Bolt  
Titus® TwistLIFT® Security Lock Handle

